

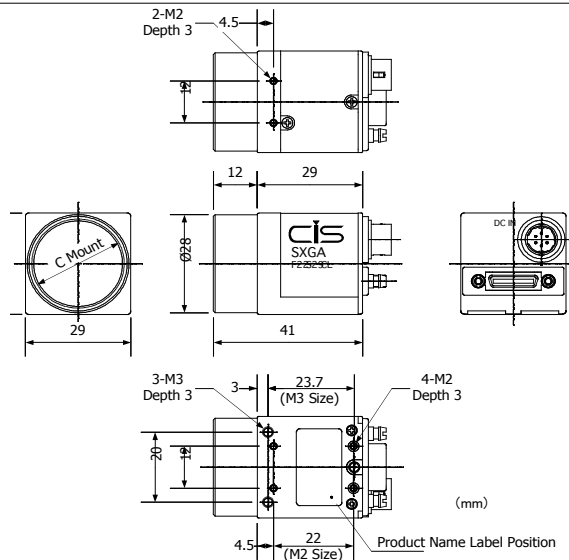
# VISION:mini™

## VCC-F22S29CL

1/2" SXGA COLOR  
CAMERA LINK



1/2" SXGA COLOR CCD VISION CAMERA AT 25 FPS



29mm<sup>2</sup>

COLOR  
RAW

MINI  
CL

EXT  
TRIGGER

PULSE  
TRIGGER

PARTIAL  
SCAN

### SPECIFICATIONS

|                            |   |
|----------------------------|---|
| RESOLUTION                 | SXGA  |
| SENSOR TYPE                | 1/2" SONY ICX 267AK CCD                     |
| FRAME RATE                 | 25 FPS                                      |
| POWER CONSUMPTION          | 2.7W  |
| INPUT VOLTAGE              | DC+12V ±10% (Max 15V)                       |
| OPERATING CONDITIONS       | 0°C ~40°C @ 20~80% HUMIDITY                 |
| WEIGHT                     | APPROXIMATELY 50g                           |
| LENS MOUNT                 | C MOUNT                                     |
| OPTICAL AXIS ACCURACY      | Less than (Pixel Center) ±0.6mm             |
| VIDEO OUTPUT SIGNAL        | Digital 8/10bit (switchable)                |
| NUMBER OF EFFECTIVE PIXELS | 1392(H)×1040(V)                             |
| HORIZONTAL SCAN FREQUENCY  | 27.425KHz                                   |
| PIXEL CLOCK                | 49.090 MHz                                  |
| PIXEL SIZE                 | 4.65×4.65(µm)                               |
| MINIMUM ILLUMINATION       | F1.4 40lx                                   |
| SENSITIVITY                | F4.0 2000lx                                 |
| STANDARD COLOR TEMPERATURE | 3200°K                                      |
| GAIN                       | 0dB, +6dB, MANUAL (min-1dB-max+12dB)        |
| ELECTRONIC SHUTTER         | OFF-1/20000sec.                             |
| SYNC. METHOD               | -   |
| EXTERNAL TRIGGER           | Fixed Shutter Exposure/Pulse Width Exposure |
| PARTIAL SCAN               | N/A   |
| GAMMA COMPENSATION         | DEFAULT OFF (OPTIONAL 0.45)                 |
| CONTROL INTERFACE          | CAMERA LINK/RS232C                          |

**CIS**  
AMERICAS

701 Fifth Ave  
Suite 4620  
Seattle, WA 98104  
800-431-CISA  
www.cis-americas.com

## VCC-F22S29CL