

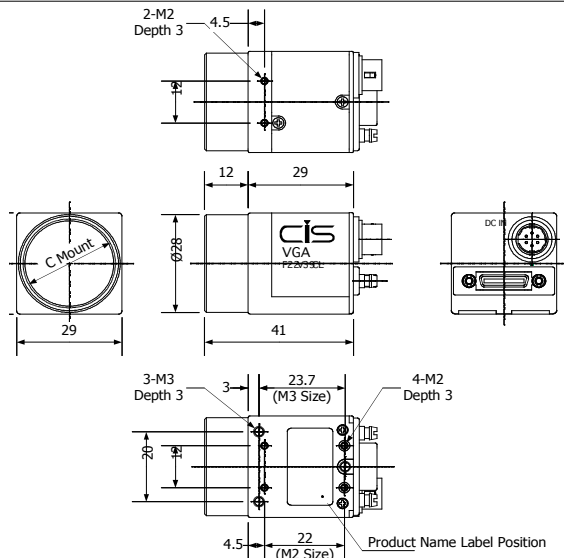
VISION:mini™

VCC-F22V39CL

1/3" VGA COLOR
CAMERA LINK



1/3" VGA COLOR CCD VISION CAMERA @ 120 FPS



SPECIFICATIONS

RESOLUTION	VGA
SENSOR TYPE	1/3" SONY ICX 424AQ CCD
FRAME RATE	120, 360 @ FULL, PARTIAL
POWER CONSUMPTION	2.5W
INPUT VOLTAGE	DC+12V ±10% (Max 15V)
OPERATING CONDITIONS	0°C ~40°C @ 20~80% HUMIDITY
WEIGHT	APPROXIMATELY 50g
LENS MOUNT	C MOUNT
OPTICAL AXIS ACCURACY	Less than (Pixel Center) ±0.1mm
VIDEO OUTPUT SIGNAL	Digital 8/10bit (switchable)
NUMBER OF EFFECTIVE PIXELS	659(H)×494(V)
HORIZONTAL SCAN FREQUENCY	62.936KHz
PIXEL CLOCK	49.090 MHz
PIXEL SIZE	7.4×7.4(μm)
MINIMUM ILLUMINATION	F1.4 50lx
SENSITIVITY	F4.0 2000lx
STANDARD COLOR TEMPERATURE	3200°K
GAIN	-1 dB, 0dB, +6dB, MANUAL (min-1dB-max+9dB)
ELECTRONIC SHUTTER	OFF- 1/40000sec.
SYNC. METHOD	-
EXTERNAL TRIGGER	Fixed Shutter Exposure/Pulse Width Exposure
PARTIAL SCAN	1/2, 1/4, 1/6 SCAN
GAMMA COMPENSATION	DEFAULT OFF (OPTIONAL 0.45)
CONTROL INTERFACE	CAMERA LINK/RS232C

CIS
AMERICAS

701 Fifth Ave
Suite 4620
Seattle, WA 98104
800-431-CISA
www.cis-americas.com

VCC-F22V39CL