

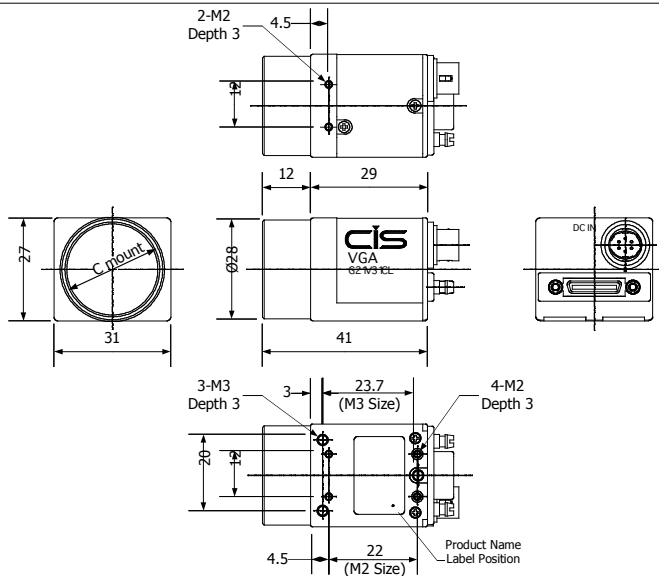
# VISION:mini™

## VCC-G21V31CL

1/3" VGA  
MONOCHROME  
CAMERA LINK



1/3" VGA MONOCHROME CCD VISION CAMERA AT 120 FPS



29mm<sup>2</sup>

B&W

MINI  
CL

EXT  
TRIGGER

PULSE  
TRIGGER

PARTIAL  
SCAN

### SPECIFICATIONS

RESOLUTION	VGA
SENSOR TYPE	1/3" SONY ICX 424AL CCD
FRAME RATE	60, 90-180 @ FULL, PARTIAL
POWER CONSUMPTION	2.2W
INPUT VOLTAGE	DC+12V ±10% (Max 15V)
OPERATING CONDITIONS	0°C ~40°C @ 20~80% HUMIDITY
WEIGHT	APPROXIMATELY 50g
LENS MOUNT	C MOUNT
OPTICAL AXIS ACCURACY	Less than (Pixel Center) ±0.6mm
VIDEO OUTPUT SIGNAL	Digital 8/10bit (switchable)
NUMBER OF EFFECTIVE PIXELS	659(H)×494(V)
HORIZONTAL SCAN FREQUENCY	31.468KHz
PIXEL CLOCK	24.545 MHz
PIXEL SIZE	7.4×7.4(μm)
MINIMUM ILLUMINATION	F1.4 1.0lx
SENSITIVITY	F8 400lx
STANDARD COLOR TEMPERATURE	3200°K
GAIN	dB, 0dB, +6dB, +12dB, MANUAL(min-3dB~max+12dB)
ELECTRONIC SHUTTER	OFF~1/20000sec.
SYNC. METHOD	-
EXTERNAL TRIGGER	Fixed Shutter Exposure/Pulse Width Exposure
PARTIAL SCAN	1/2, 1/4, 1/6 SCAN
GAMMA COMPENSATION	DEFAULT OFF (OPTIONAL 0.45)
CONTROL INTERFACE	CAMERA LINK/RS232C

**CIS**  
AMERICAS

701 Fifth Ave  
Suite 4620  
Seattle, WA 98104  
800-431-CISA  
www.cis-americas.com

## VCC-G21V31CL